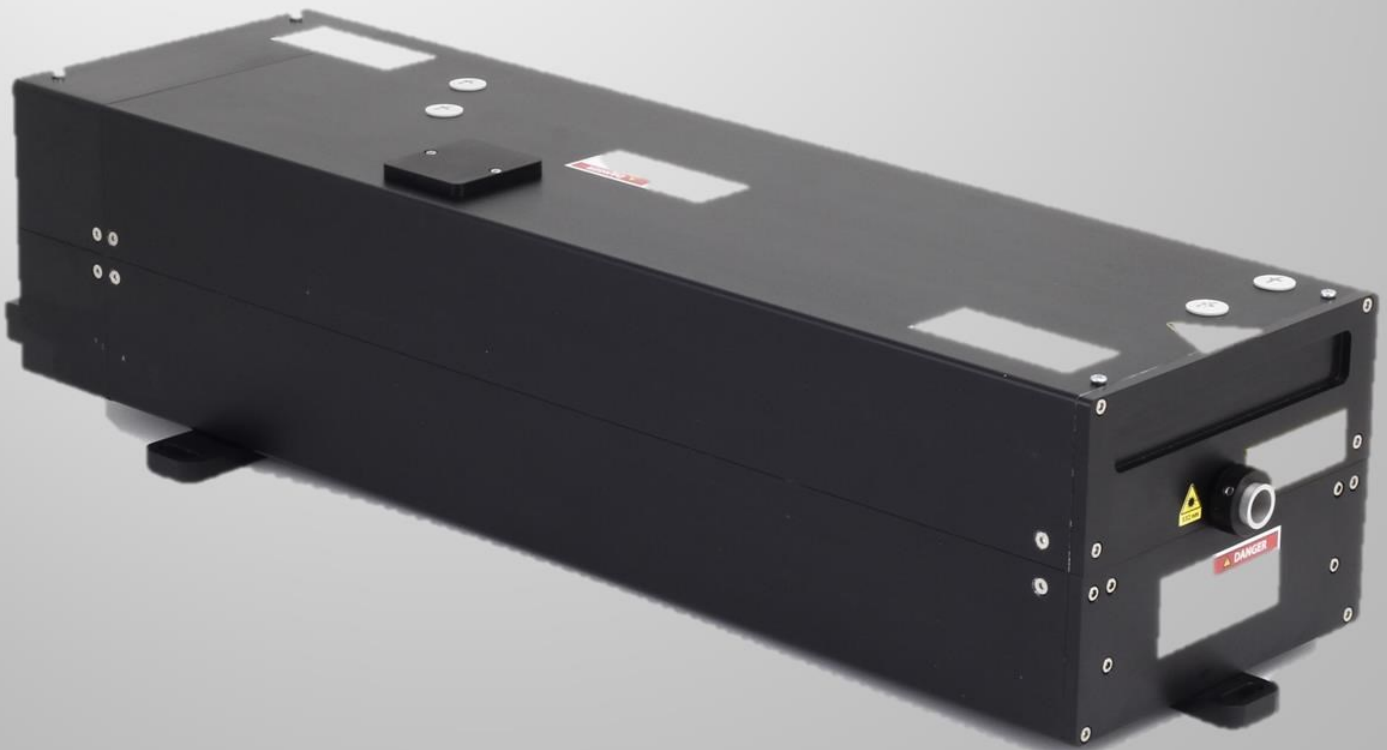


BeLL 1064-20

DPSS Nd:YAG Q-switched laser



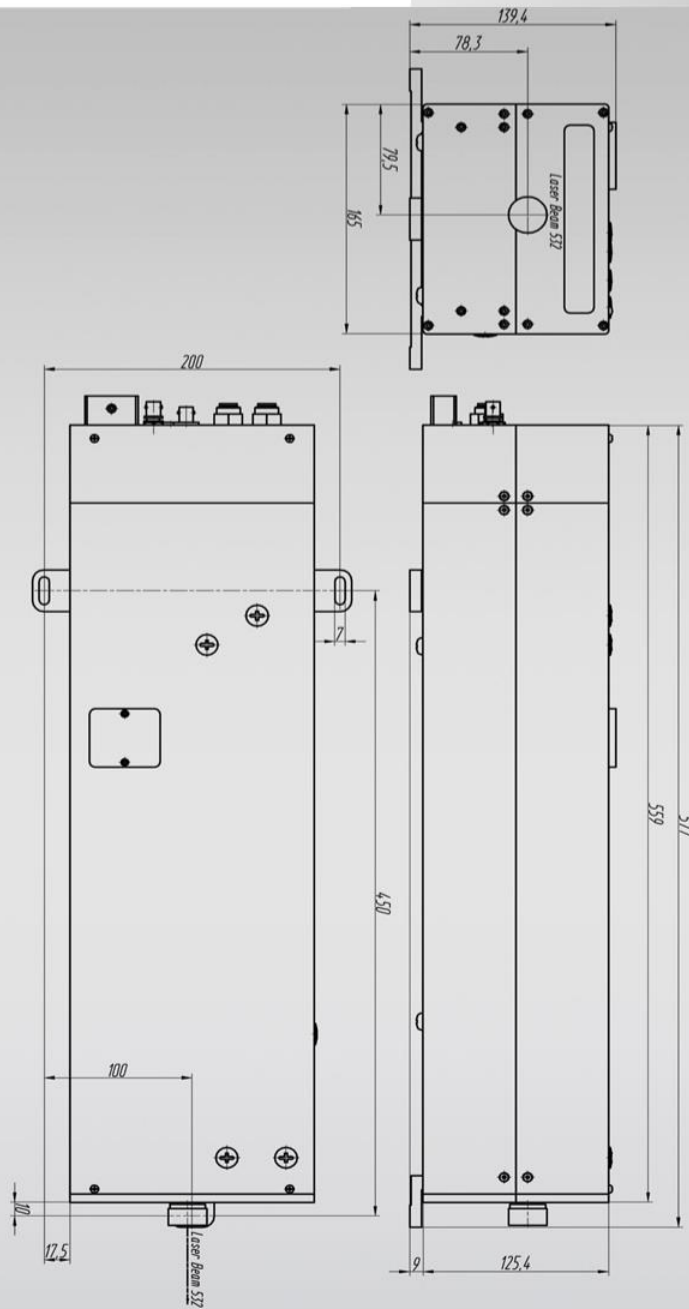
BeLL 1064-20



- ❑ High stability and durability of output parameters is provided by special temperature control of nonlinear crystal and by the special design of the resonator
- ❑ Compact and rigid mechanical design
- ❑ Perfect beam quality
- ❑ Long life-time of pump source
- ❑ Thermo stabilization of SH crystal

Laser type	DPSS (water cooled)
Wavelength	1064 nm
Power	22 W
Mode	TEM00
Repetition rate,	4 – 30 kHz
Pulse width	80 – 130 nsec
Beam diameter	1.6 mm
Beam divergence	2.4 mrad
Polarization	Linear, Vertical
Stability (8h)	2.7 % RMS

BeLL 1064-20



Dimensions and Electrical Specifications

Laser head	70mm(W) x 140mm(H) x 580(L)
Power supply	482mm(W) x 80mm(H) x 280(L)
RF-driver	482mm(W) x 80mm(H) x 280(L)
Cooling	Chiller (recirculating water 50 psi minimum)
Electrical	100 - 250 VAC, 8 A, 50-60 Hz
Operating temp	18-30°C